

Sustainable Hospitals Lab

Striving for hospitals that contribute to healthy people
AND a healthy planet



Mission

Currently, the healthcare sector is overly focused on short-term financial gains instead of long-term sustainable solutions. Stakeholders are afraid of taking the risks that come with sustainable innovations.

Hospitals are faced with:



Balancing financials



Patient safety



Rules & Regulations



Environmental sustainability

As the current way of going is not sustainable going forward, our mission is increase sustainability in hospitals by using our different backgrounds and perspectives to come up with ways to achieve this in different fields of interest.

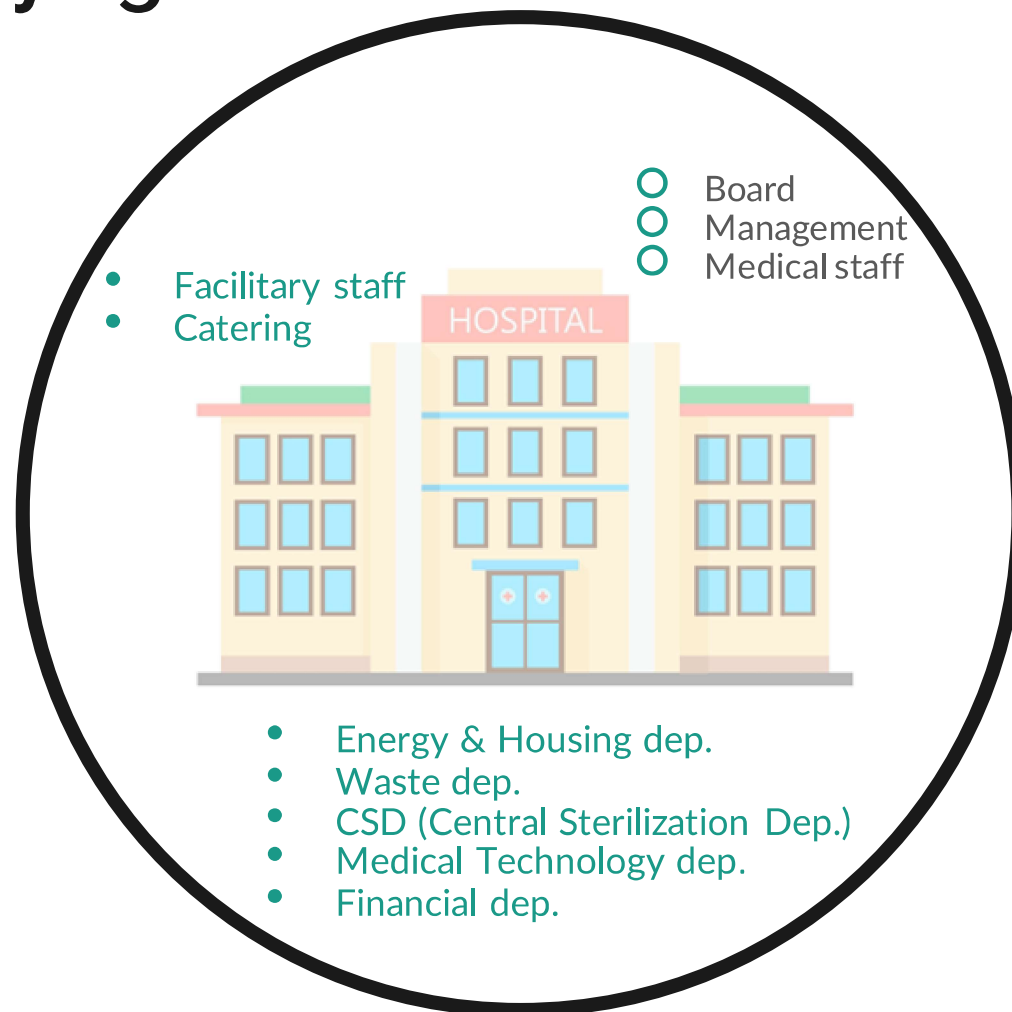
Mission

LDE pressure cooker

- LEGO serious play to form a model
- Interdisciplinary result
- All found common results/outcomes



Identifying stakeholders



- Patients
- Suppliers
- Manufacturers & Developers
- Energy producers
- Waste companies
- Government/IGJ
- Insurance companies

Barriers towards sustainability

Social



- Patient safety
- Lack of knowledge with employees
- Lack of awareness with employees
- Lack of willingness with employees
- ALARA vs. evidence-based conclusions

Financial



- Lack of financial resources in hospitals
- Cost focused view (short-term based)
- Large investment sums are needed
- Time constraints

Regulatory



- Current rules & regulations limit sustainable development and implementation
- Additional regulation on sustainable goals is needed
- Liability and/or intended use

(Raw) Materials



- Quality assurance and/or Integrity check in needed

Strategy

Social

- Photo exposition for creating awareness and increasing knowledge
- Reconsidering the extend of patient safety
- Improving waste streams
- Taking sustainability into account in acquisition

Financial

- Creating a financial incentive for stakeholders (manufacturers, hospitals, employees, waste companies, etc.)
- Subsidizing early transfers towards a more sustainable business
- Creating a positive business model by valuing sustainability

Regulatory

- Acquire additional regulation for future sustainability goals
- Discuss the possibility of governmental collaboration with regards to rules & regulations

General advice

In order to increase hospital sustainability we have to adjust inhouse ways of working as well as external ways of working!

We have to try and create an incentive for all stakeholders!

We need to have a active attitude, less wait-and-see!



A more in-depth advice with regards to the different fields of interest will be given in the following presentations.

We hope to be working towards hospitals that contribute to healthy people AND a healthy planet

Thank you!

Questions?

